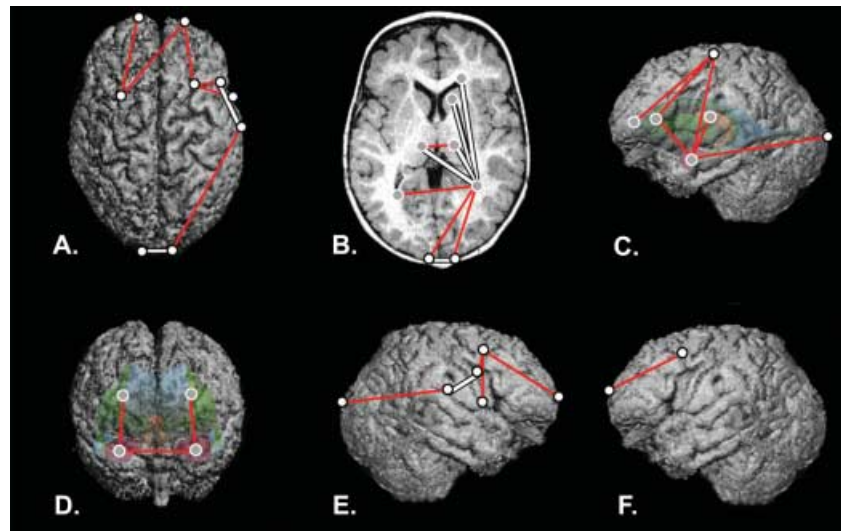


ERRATUM

In Volume 206, Issue 4 of the *Journal of Anatomy*, the article by Aldridge and colleagues contained an incorrect version of Figure 6. It appears here as it was originally intended.

Fig. 6 Comparisons of postoperative an ISS sample and unaffected sample at Age B, shown on MRI reconstructions of a postoperative ISS patient. The top row represents a superior view of the cortical surface (A), a transverse slice displaying subcortical structures (B) and the left lateral view of the 3D surface with a model of subcortical structures ghosted beneath (C). The bottom row represents a midsagittal slice (D), a right lateral view of the 3D reconstruction of the cortical surface (E) and a left lateral view of the 3D reconstruction of the cortical surface (F). White dots represent landmarks located on the cortical surface, and grey dots represent landmarks located on subcortical structures. Red lines indicate linear distances that are significantly greater in the postoperative ISS sample, and white lines indicate linear distances that are significantly smaller.



Aldridge K, Kane AA, Marsh JL, Yan P, Govier D, Richtsmeier JT (2005) Relationship of brain and skull in pre- and postoperative sagittal synostosis. *J Anat* 206, 373–385.